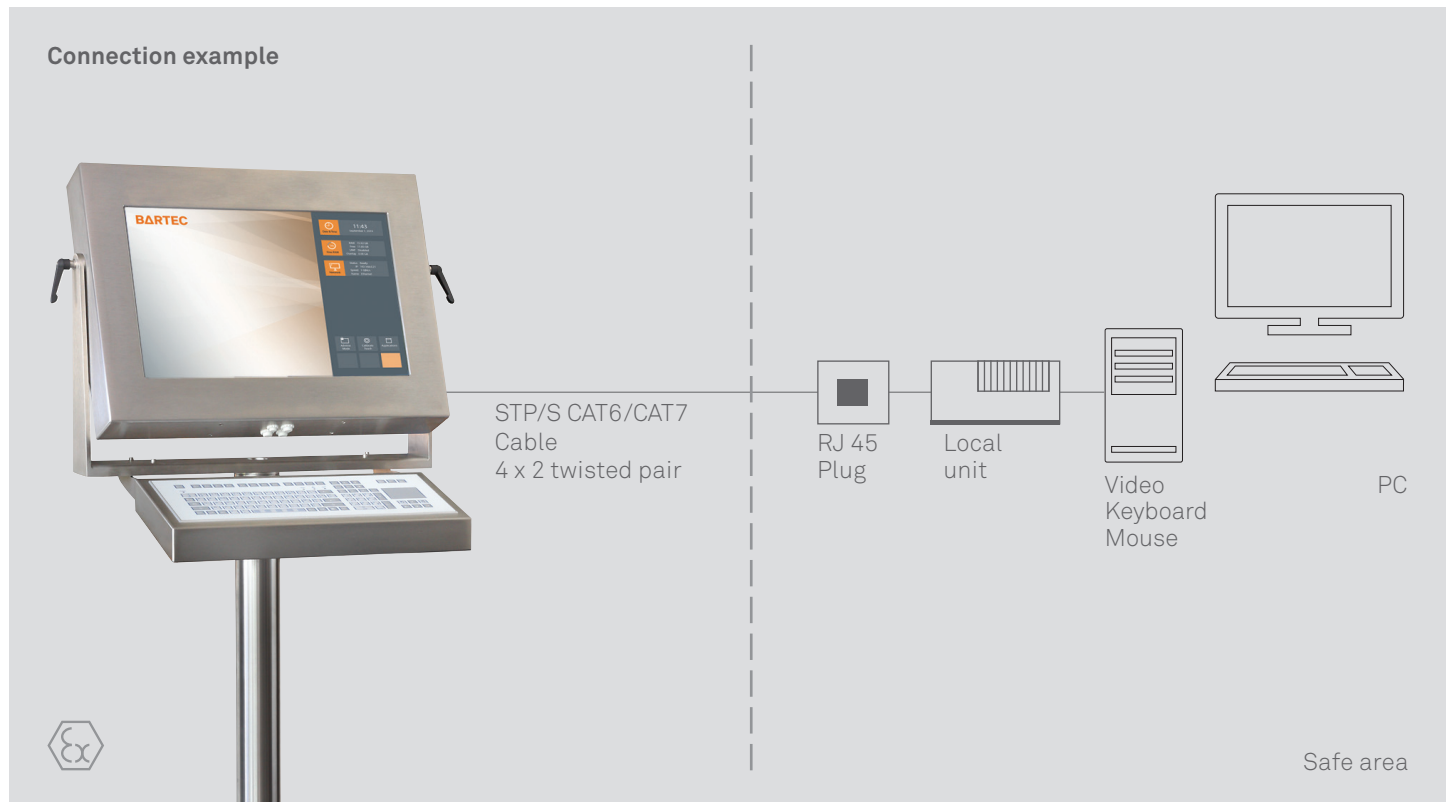


Polaris Remote KVM

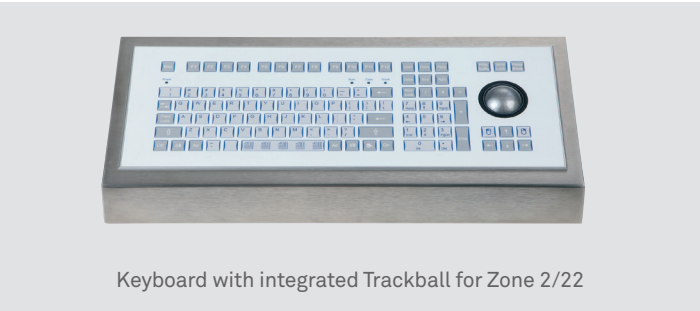
for zone 2 and 21/22



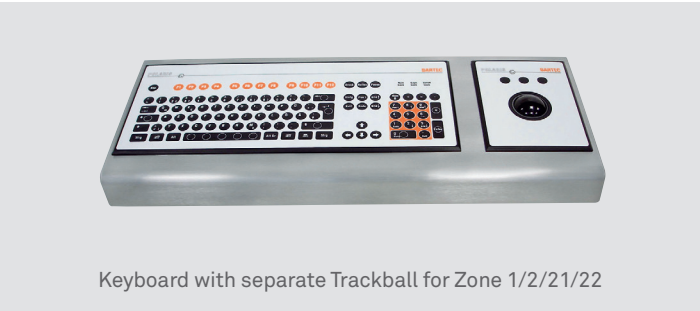
The POLARIS Remote KVM series from BARTEC is a display with the same features as the Ex area a PC can be operated in the safe area. Distances via STP-cable up to 300 m and LWL up to 20 km are possible. The POLARIS Remote KVM series offers the user the possibility to use any PC-based process control system available today without restrictions in hazardous areas.

The wired electrical connections are made in the Stainless steel housing. The latest display technology ensures optimal contrast even with large viewing areas. For optimal use, the devices are available as wall, floor or table mounting. To the keyboard variants a touch screen is optionally possible, it offers the maximum of operating comfort.

- Hardware connection
- Realtime
- Plug & Play



Keyboard with integrated Trackball for Zone 2/22



Keyboard with separate Trackball for Zone 1/2/21/22

Explosion protection

| | |
|-------------------------------|---|
| Marking ATEX Zone 2 and 21 | Ex II 3(2)G Ex ec ib [ib IIC oder IIB Gb] IIC T4 Gc Ex II 3G Ex ec ib IIC T4 Gc Ex II 2D (2G) Ex ib tb [ib IIC oder IIB Gb] IIIC T120 °C Db -25 °C Ta +50°C |
| Certification | IBExU 05 ATEX 1117 X |
| Marking IECEx | Ex ec ib [ib IIC or IIB Gb] IIC T4 Gc Ex ec ib IIC T4 Gc Ex ib tb [ib IIC or IIB Gb] IIIC T120 °C Db -25 °C ≤ Tamb ≤ +50 °C |
| Certification | IECEX IBE 21.0004X |

The marking is variable and depends on type and components used.
Other approvals and certificates, see bartec.com

Technical data

| | |
|--|---|
| Construction | Stainless-steel enclosure |
| Protection class | IP 65 |
| Cable length | up to 300 m via STP cable VGA/USB up to 100 m via STP cable DVI/USB up to 500 m via LWL Multi Mode DVI/USB up to 20 km via LWL Single Mode DVI/USB |
| Optional accessories | Handscanner on request |
| Power supply | DC 24 V ± 10 % 100 to 230 V, 50 or 60 Hz |
| Input voltage range | DC 24 V ± 10 % AC 90 V or 253 V |
| Max. power consumption | P _{max.} < 75 W |
| Permissible ambient temperatures | Storage -25 °C to +60 °C Operation 0 °C to +50 °C |
| Relative air humidity | 5 to 95 % non-condensing |
| Material | Stainless steel, polyester film |
| Optional accessories Zone 2/22 | Stainless steel enclosure with Keyboard with integrated trackball 38 mm Keyboard with integrated touchpad |
| Optional accessories Zone 1/2/21/22 | Stainless steel enclosure with Keyboard and separate trackball 50 mm (POLARIS Zone 1 serie) |

Versions

| POLARIS II Remote | KVM19,1" | KVM 21,5" W | KVM 24" W |
|---|-------------------------|-------------------------|-------------------------|
| TFT graphic display | 19,1" | 21,5" W | 24" W |
| Colors | 16,7 million | 16,7 million | 16,7 million |
| Resolution (pixels) | SXGA 1280 x 1024 | Full HD 1920 x 1080 | Full HD 1920 x 1080 |
| Brightness | 300 cd/m² | 250 cd/m² | 300 cd/m² |
| Visible surface approx. | 376 x 301 mm | 476 x 268 mm | 531 x 299 mm |
| Contrast | 1300:1 | 5000:1 | 5000:1 |
| Touchscreen (resistive) | optional | optional | optional |
| Backlighting | LED technology | LED technology | LED technology |
| Service life approx. (at +25 °C) | 50.000 hours | 50.000 hours | 50.000 hours |
| Display unit (in mm) | 610 x 450 x approx. 100 | 610 x 450 x approx. 100 | 660 x 450 x approx. 100 |
| With mounting adapter and keyboard (in mm) | 730 x 520 x approx. 400 | 730 x 520 x approx. 400 | 785 x 610 x approx. 400 |
| Weight | approx. 17 kg | approx. 17 kg | approx. 19 kg |

Ordering information

| | | | | | | | | | | | | | | | | |
|---|---|---|---|---|---|---|---|---|---|---|---|---|---|---|---|---|
| 1 | 7 | - | 7 | 2 | V | 5 | - | * | * | 0 | * | / | * | * | 0 | 0 |
| | | | | | | | | A | B | | C | D | E | | | |

| | | |
|---|---|--|
| A | Designation 6 – POLARIS II Remote KVM 19,1" without Touchschreen 5 – POLARIS II Remote KVM 19,1" with Touchschreen B – POLARIS II Remote KVM 21,5" without Touchschreen C – POLARIS II Remote KVM 21,5" W with Touchschreen 8 – POLARIS II Remote KVM 24" with Touchscreen 7 – POLARIS II Remote KVM 24" W without Touchscreen | |
| B | Input voltage range 1 – AC 90 to 253 V 2 – DC 24 V | |
| C | Cable length 0 – up to 300 m at 19,1", up to 200 m at 21,5" W 4 – up to 100 m via STP cable DVI/USB 5 – up to 500 m via LWL Multi Mode DVI/USB 6 – up to 20 km via LWL Single Mode DVI/USB | |
| D | Keyboard language, integrated version 1 – German 2 – English 3 – French | Keyboard language, separate version 1 – German 2 – English 3 – French x - others on request |
| E | Input device, integrated version 2 – Trackball 38 mm 4 – Touchpad | Input device, separate version 5 – Trackball 50 mm |
| Please insert code number. Technical data subject to change without notice. You can find the accessories with ordering information on the accessories pages. | | |